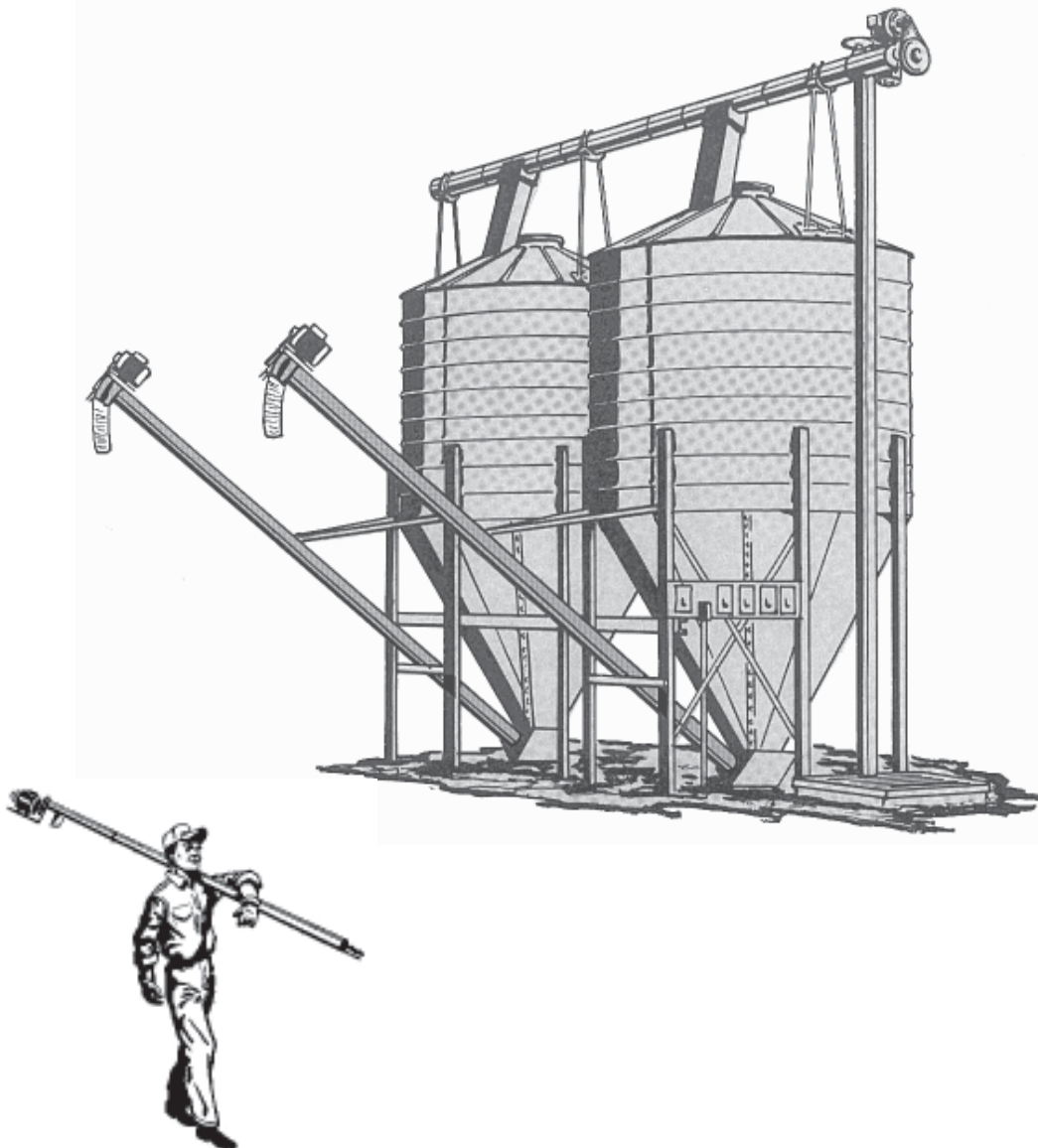


# MY-D HAN-D

MFG. CO. INC.  
DODGE CITY, KANSAS 67801 (620) 225-0263

## 4" Electric Utility Auger

### Owners Manual

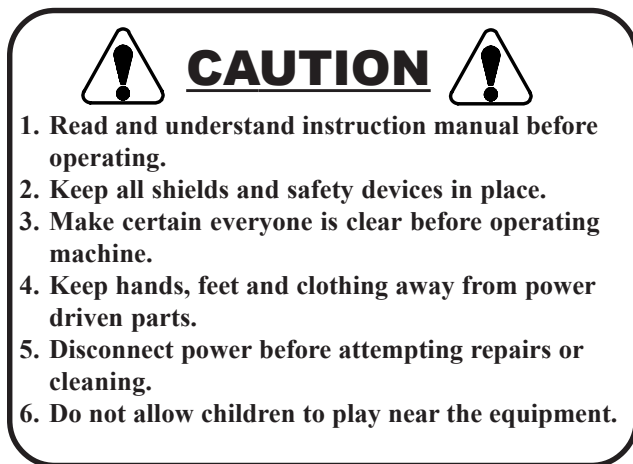




**BE ALERT!**  
Your Safety is Involved

## **! SAFETY IS NO ACCIDENT !**

**Watch for this symbol throughout the operator's manual to point out important safety precautions.**



- 1. Read and understand instruction manual before operating.**
- 2. Keep all shields and safety devices in place.**
- 3. Make certain everyone is clear before operating machine.**
- 4. Keep hands, feet and clothing away from power driven parts.**
- 5. Disconnect power before attempting repairs or cleaning.**
- 6. Do not allow children to play near the equipment.**

## **Be A Safe Operator** **By Thinking-Before Acting** **And**

## **By Reading Your Operators Manual** **Avoid Accidents**

Most Accidents, Whether They Occur In Industry, On The Farm, At Home Or On The Highway, Are Caused By The Failure Of Some Individual To Follow Simple And Fundamental Safety Rules Or Precautions .For This Reason Most Accidents Can Be Prevented By Recognizing The Real Cause And Doing Something About It Before The Accident Occurs.

Regardless Of The Care Used In The Design And Construction Of Any Type Of Equipment, There Are Many Conditions That Cannot Be Completely Safe Guarded Against Without Interfering With Reasonable Accessibility And Efficient Operation.

## **A Careful Operator Is The Best Insurance** **Against An Accident.**

The Complete Observance Of One Simple Rule Would Prevent Many Thousand Serious Injuries Each Year. That Rule Is: Never Attempt To Clean, Oil, or Adjust A Machine While It Is In Motion!

### **Limited Warranty**

All My-D Han-D Mfg. Co. Inc. products have been manufactured from the very finest material and by skilled workmen, therefore, My-D Han-D Mfg. Co. Inc. guarantees its products against defective workmanship and material under normal and reasonable use for a period of ONE (1) year, after the date of delivery, to the original purchaser.

This warranty is not a service guarantee, nor is it any assurance that the product is perfectly designed or perfectly built; neither is it an expression of any belief that the product cannot be improved. Further, this warranty is not a guarantee against hazards such as wear, tear, misuse or misfortune or against problems arising from incorrect set-up or servicing and is not a guarantee that the performance will meet the expectations of the purchaser.

This warranty is void should the product be repaired or modified in any way not authorized by My-D Han-D Mfg. Co. Inc.

There is no other express warranty, implied warranties, including those of merchantability and fitness for a particular purpose other than the extent permitted by law any and all implied warranties are excluded. This is the exclusive remedy, and liability for consequential damages under any and all warranties are excluded to the extent exclusion is permitted by law.

Components will carry only their respective manufacturer's warranty. This warranty does not cover any merchandise which, in the opinion of the company, has been subject to negligent handling, misuse, or accident.

Our obligation under this warranty is limited, however, to furnishing a replacement part for the defective part, or at our option to repairing the defective parts without charge, either method F.O.B. our works, provided the consumer gives My-D Han-D Mfg. Co. Inc. written notice within ten (10) days after said part appears to be defective and affords My-D Han-D Mfg. Co. Inc. opportunity to inspect. Unless otherwise expressly agreed to by My-D Han-D Mfg. Co. Inc. the consumer shall bear the expense of installation.

My-D Han-D Mfg. Co. Inc., reserves the right to make changes, improvements, and modifications at any time without incurring the obligation to make such changes, improvements, and modification on any products sold previously.

My-D Han-D Mfg. Co. Inc. will not be responsible or liable in any event for any loss of production, profits, downtime, delays, accidents, or expenses, or for any other special, indirect or consequential damages.

**MY-D HAN-D MFG. CO. INC.**  
**10881 McARTOR ROAD**  
**Dodge City, Kansas 67801 (620) 225-0263**

## Table Of Contents

Safety Is No Accident.....	1
Limited Warranty .....	1
Table Of Contents .....	2
Receipt Of Order.....	2
Specifications .....	2
Sign Off Sheet .....	3
Safety Notices .....	4
Grain Bin Safety .....	5
Assembly Instructions .....	6-7
Maintenance Check List .....	2
Instructions For Ordering Parts .....	8
Illustrated Parts List And Drawing.....	8-9

Study this entire manual and familiarize yourself with the different parts of the My-D Han-D Utility Auger and their particular functions.

File this manual in a safe and convenient place for easy reference. Make it your guide for operating, lubricating and servicing your My-D Han-D Utility Auger.

Careful observance of these instructions can add to the life of your Utility auger parts and assure satisfactory performance.

## Receipt Of Order

Upon receipt of order, check all parts against the packing list and examine for any evidence of damage. Notify the carrier and the distributor the auger was ordered from immediately of any discrepancy. Consignee must file claim for loss or damage with the delivering carrier.

## Specifications

Length: 11', 16' & 21'	Auger Speed: 650 to 700 RPM (Dry Grain)
Tube Diameter: 4" Dia. X 16 Ga. Galvanized	Type Of Drive: Electric
Auger Shaft: 5/8" Dia. CRR	Drive Sheave: 2.0" P.D.
Flighting: 3-1/2" 14 Ga.	Driven Sheave: 5.0" P.D.
Auger Bearing: 5/8" Press Fit Bearing	

### Power Requirements

(Normal Operation)

Length:	Electric Motor:
11'	1/2 H.P.
16'	3/4 H.P.
21'	1 H.P.

### Capacity

(Bu. Per Hour Dry Grain)

Elevation:	Bu. Per Hour
Horizontal	700
45 deg.	350

## Machine Inspection

After delivery of your new My-D Han-D Utility Auger, and or completion of assembly and before each use, inspection of the machine is mandatory. This inspection should include but not be limited to:

1. Check to see that all guards listed in the assembly instructions are in place, secured and functional.
2. Are all fasteners tight?
3. Are all belts properly adjusted?

### Pre-Operational and Maintenance Check List

1. Check flighting for correct rotation.
2. Check to see that all guards are in place.
3. Keep the v-belt adjusted to the point where it does not slip on the sheaves.

## Lubrication Guide



!Disengage All Power Before Lubricating!



**Do Not Operate The Auger Empty!**



**Watch for this symbol. it points out important safety precautions.**



**It means**

**“ATTENTION - BECOME ALERT!” YOUR SAFETY IS INVOLVED.**



Occupational safety is of prime concern to the members of the AUGER AND ELEVATOR MANUFACTURERS COUNCIL. This Auger manual was written with the safety of the operator and the others who come in contact with the equipment as our prime concern. The manual presents day to day work problems encountered by the operator and other personnel. We wrote this manual to help you understand safe operating procedures for the equipment listed in the following pages. We want you as our partner in safety.

It is your responsibility as an owner, operator or supervisor to know and instruct everyone using this grain Auger at the time of initial assignment and at least annually thereafter, of the proper operating instructions, precautions and work hazards which exist in the operation of this Auger in accordance with OSHA regulation 1928.57.

The annual statistics of the national safety council show that many people die or suffer serious injury in needless farming accidents every year.

**Don't become a victim. Put safety first in all farm operations.**



**SAFETY IS NO ACCIDENT**



The following safety instructions, combined with common sense, will save your equipment from needless damage and the operator from unnecessary exposure to personal hazard. Pay special attention to the caution notes in the text. Review this manual at least once each year with new and/or experienced operators.



**ELECTRIC SAFETY**



1. Electric motors and controls should be wired by a qualified electrician and meet all standards set by federal, state and local electrical codes
2. A magnetic starter should be used to protect your motor.
3. Your motor must have a manual reset button.
4. Electrical power must be disconnected before resetting your motor.
5. The motor controls and reset button must be located so that the operator has a full view of the entire operation.
6. Make sure the power source is disengaged and all parts have come to a complete stop before making any adjustments or servicing the hopper.
7. Keep all guards and shields in place when the Auger is in operation.
8. A main power disconnect switch, with the ability to be locked in the off position, should be provided. the switch should be locked whenever work is to be done on the Auger.
9. Keep clothing, hair and body away from all moving parts. it is a good idea to remove all jewelry before starting the operation.



**OPERATIONAL SAFETY**



1. During regular operation of the Auger, one person should be in a position to monitor the operation. a second person should always be near by to shut down the Auger in case of an emergency.
2. Visually inspect the Auger periodically during operation for signs of unusual vibration, loose fasteners and noises.
3. Make sure everyone that isn't directly involved with the operation is out of the work area before operating or moving the Auger.
4. Make sure all safety devices, shields and guards are in place and are functional before beginning operation.



### SAFETY PRECAUTIONS



1. Keep away from all moving parts
2. Keep all belt guards and chain guards in place.
3. Disengage power before resetting motor.
4. Never attempt to clean, adjust or service the machine while it is in operation.
5. Keep work area clean of grease, oil, water, and/or other objects that could cause a slip or a fall.



### NORMAL SHUTDOWN



Make certain that the Auger is empty before stopping the unit. Lock out the power source before leaving the work area.



### EMERGENCY SHUTDOWN



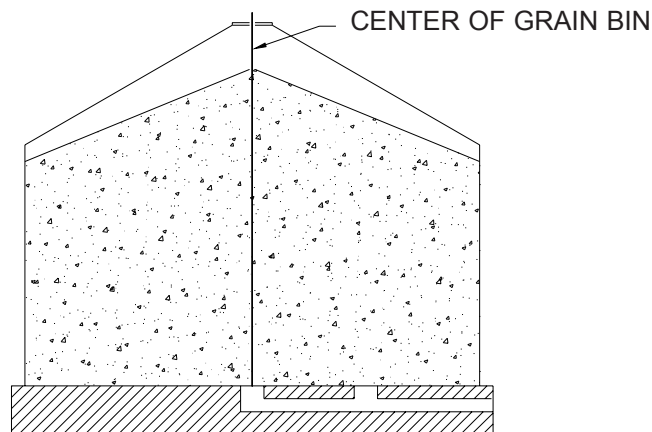
1. Should the Auger be immediately shutdown under load, disconnect and lockout the power source. Clear as much grain from the Auger as you can. NEVER attempt to restart when full.
2. Starting the unit under load may result in damage to the Auger. Such damage is considered abuse of the equipment.
3. Reconnect power source and clear Auger gradually.



## WARNING

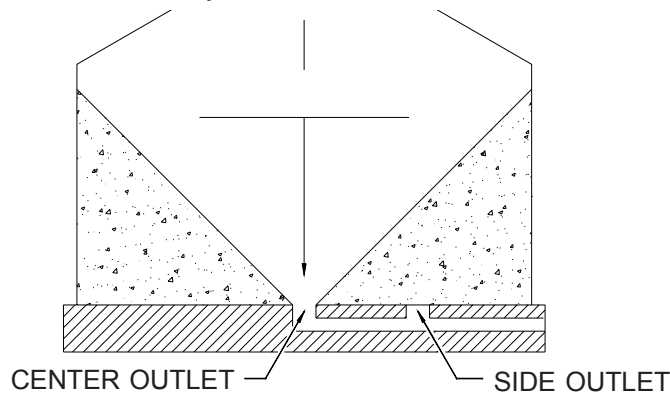


### **GRAIN BIN TO BE FILLED WITH GRAIN FROM THE CENTER ONLY!**



Use Only Center Outlet Until No Grain Remains Above This Outlet

Then And Only Then Can The Side Outlets Be Used.



**11', 16' & 21'**  
**"400" UTILITY AUGER SET-UP INSTRUCTIONS**

Before starting assembly procedures, refer to the repair parts listing and familiarize yourself with these parts. Tools necessary for ease of assembly includes a socket wrench (impact if desired), vise grips, level and pliers. A means of lifting will be required for lifting the tube into place and for lifting the auger after it has been assembled.

**Assemble The Utility Auger Drive Parts Using The Following Steps.**

Step A. Install the motor mount "A" into the two holes located in the head of the tube assembly "B".  
Refer to Fig. 1.

Step B. Install motor mount clamp "C" over the two motor mount bars "A" and attach using one (1) 5/16" x 1-1/2" HHCS and one (1) 5/16" hex nut. Do not tighten these fasteners at this time.

Step C. Pull the flighting shaft "E" forward and install the 5" sheave "D" using the cotter pin "F" (the sheave hub must face the bearing). At this time push the 5" sheave back against the face of the bearing.  
Refer to Fig. 1.

Step D. Assemble the motor mount straps "G" onto the motor mount "A" and loosely fasten using two (2) motor mount clamps "H", two (2) 5/16"x1" carriage bolts and two (2) 5/16" hex nuts.  
Refer to Fig. 1.

Step E. Install the electric motor onto the motor mount straps "G" and fasten using four (4) 1/4"x 3/4" HHCS, eight (8) 1/4" flat washers and four (4) 1/4" hex nuts. Use a flat washer next to the head of each bolt and next to each nut.

Step F. Install the 2" sheave "I" onto the motor shaft. Align the 2" sheave "I" and the 5" sheave "D" and install the V-belt "J", the proper tension for the V-belt is 5/8" deflection, after the proper tension has been acquired, tighten the motor mount clamp "C" to hold. Refer to Fig. 1.

Note: At This Time Tighten the Fasteners in Step D.  
Have A Qualified Electrician Connect the Wiring to the Motor and Starter.  
Double check your V-belt alignment, improper alignment will cause your V-belts unnecessary wear resulting in a shorter life span.

Step G. Attach the belt guard bracket "K" to the belt guard "L" using two (2) 1/4" x 1" HHCS and two (2) 1/4" hex nuts. Fit this assembly around the sheaves and attach to the motor mount "A" using motor mount clamp "M", one (1) 5/16" x 1" HHCS and one (1) 5/16" hex nut. Refer to Fig. 1.

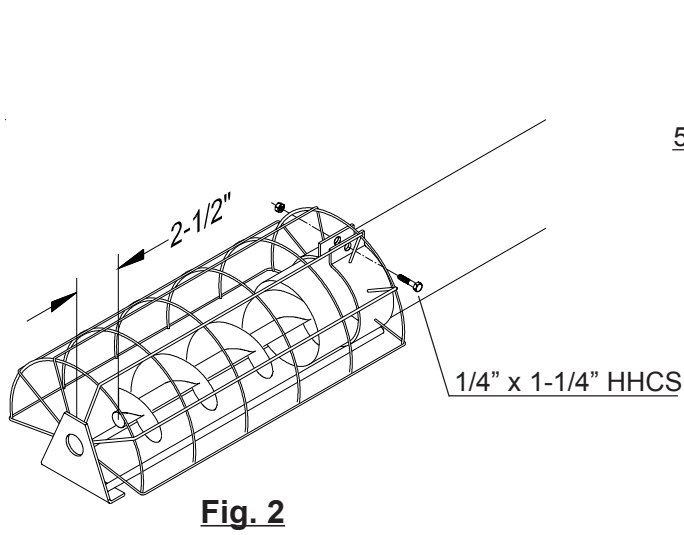
Note: If you have purchased the optional 5' or 10' extension tube and flighting, assemble it at this time.  
Refer to Fig. 3 for assembly instructions.

Step H. Slide the safety cage weldment "M" over the tube, locate the cage so there is 2-1/2" clearance between the inside of the cage and the end of the flighting. Secure the safety cage to the auger tube, using one (1) 1/4" x 1-1/4" HHCS and one (1) 1/4" hex nut. Refer to Fig. 2.

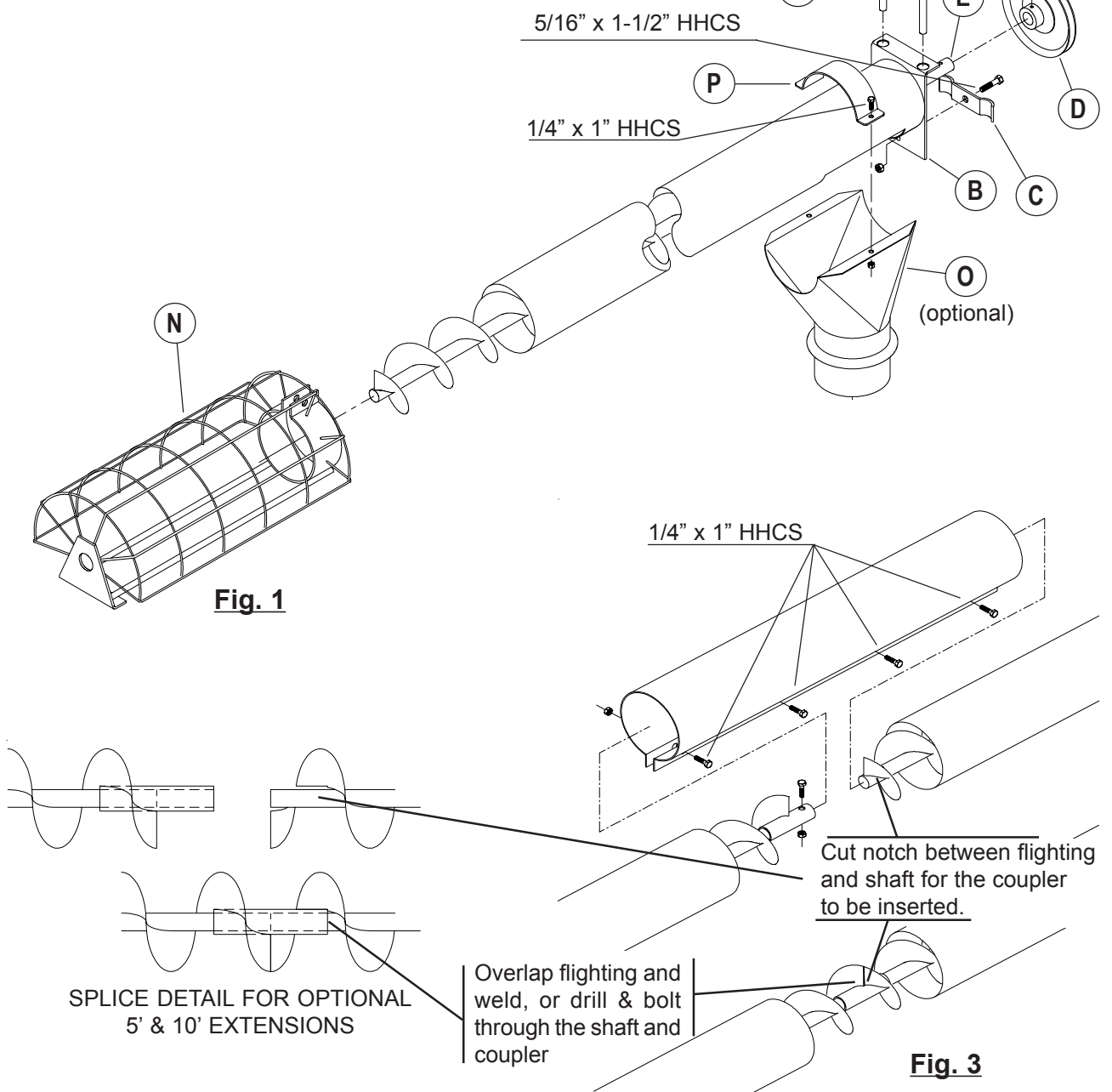
Flex Spout Assembly Instructions

Step I. Locate the spout "N" over the discharge hole and attach using the half band "O" and two (2) 1/4" x 1" HHCS and two (2) 1/4" hex nuts. Refer to Fig. 1.





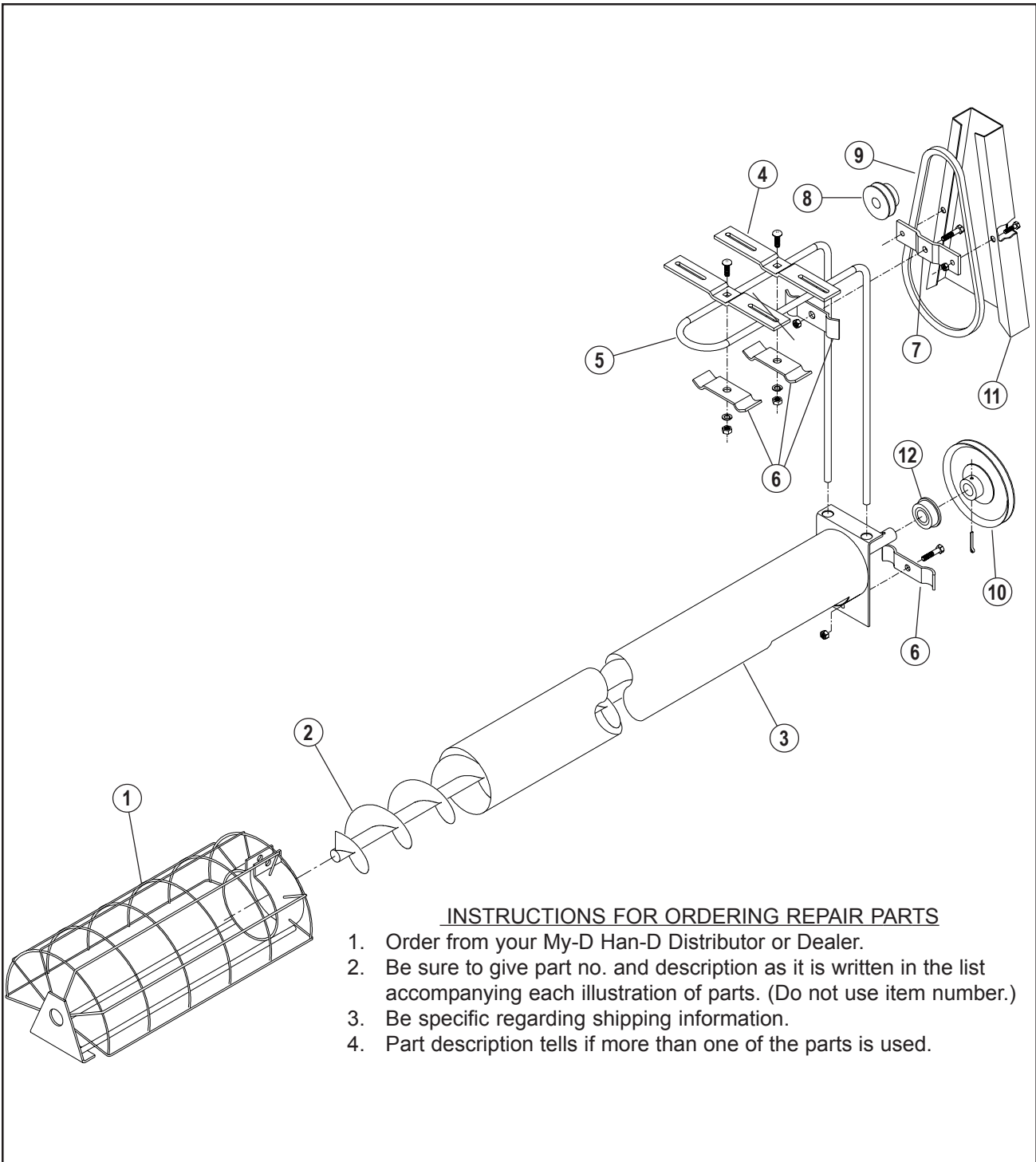
**Fig. 2**



**Fig. 1**

**Fig. 3**



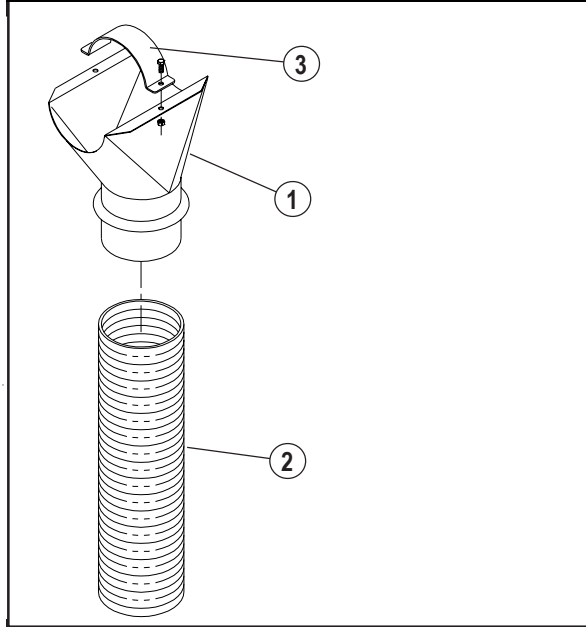


INSTRUCTIONS FOR ORDERING REPAIR PARTS

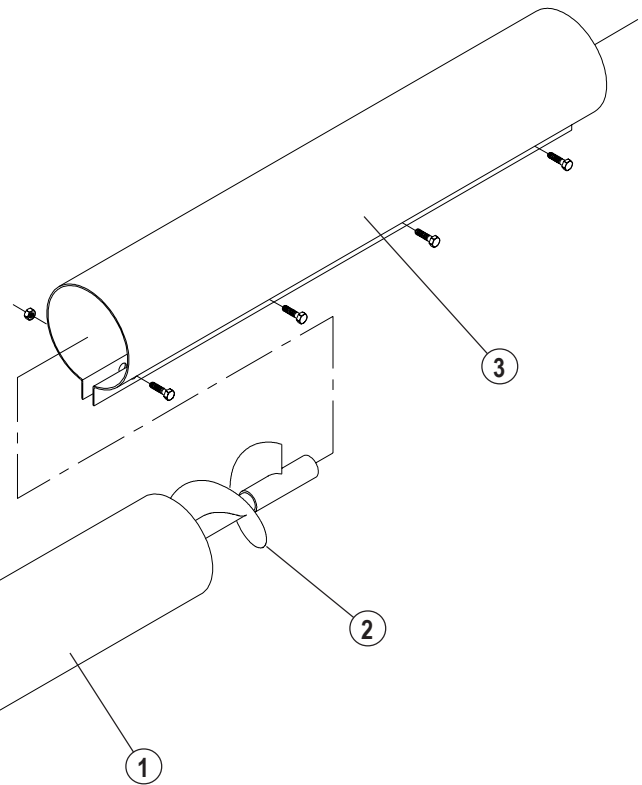
1. Order from your My-D Han-D Distributor or Dealer.
2. Be sure to give part no. and description as it is written in the list accompanying each illustration of parts. (Do not use item number.)
3. Be specific regarding shipping information.
4. Part description tells if more than one of the parts is used.

Item No.	Part No.	Description	Qty.	Item No.	Part No.	Description	Qty.
1	829994	Safety Cage	1	6	108399	Motor Mount Clamp	4
2	811331	Flighting Weldment (21')	1	7	169904	Belt Guard Strap	1
	811349	Flighting Weldment (16')	1	8	043844	1-A 2" x .675" Sheave	1
	811356	Flighting Weldment (11')	1	9	035261	V-Belt 2280	1
3	811372	11' Utility Auger Tube	1	10	042515	1-A 5" x .675" Sheave	1
	811364	16' Utility Auger Tube	1	11	169912	Belt Guard	1
	811380	21' Utility Auger Tube	1	12	030296	5/8" Bearing	1
4	109133	Motor Mount Strap	2	13	884283	Bolt Sack (not shown)	1
5	108985	Motor Mount	1	14			

Flex Spout (optional)			
Item No.	Part No.	Description	Qty.
1	891986	Standard Boot w/ Band	1
	820696	Swivel Boot w/ Band	1
2	902858	3' Flex Spout w/ Boot	1
	902866	5' Flex Spout w/ Boot	1
3	108902	Half Band	1



"400" Utility Auger Bundle List				
Part No.	Description	Qty.		
		11'	16'	21'
885624	"400" Utility Auger Parts Carton	1	1	1
899005	11' Tube Bundle	1		
899013	16' Tube Bundle		1	
899021	21' Tube Bundle			1



**5' Utility Extension Bundle Part No. 902908**  
**10' Utility Extension Bundle Part No. 656074**

Item No.	Part No.	Description	Qty.
1	000315	5' Tube	1
	000301	10' Tube	1
2	812826	5' Flighting	1
	837690	10' Flighting	1
3	117913	Connecting Sleeve "400"	1